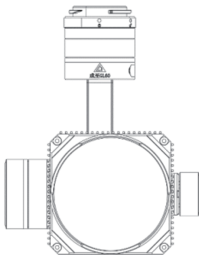


# GL60云台灯说明书

用户说明书 (V1.0)

2020.06.08



# 目录

一、云台灯系列介绍	2
二、免责声明与警告	2
三、GL60介绍	3
四、DJI Pilot使用教程	5
五、固件升级	9

---

## 一、云台灯系列介绍

成至云台灯系列产品，适用于巡检、刑事追捕、云台相机补光、搜救巡查、电力抢修、夜间救援、轮船海上照明等用途。

采用大疆DJI SKYPORT V2通用转接环，无需额外供电，即插即用，完美适配DJI M300 RTK/DJI M210 V2无人机。

## 二、免责声明与警告

感谢您购买成至智能产品。本文所提及的内容关系到您的安全以及合法权益与责任。使用本产品之前，请仔细阅读本文以确保已对产品进行正确的设置。不遵循和不按照本文的说明与警告来操作可能会给您和周围的人带来伤害，损坏本产品或其它周围的物品。本文档及所有相关的文档最终解释权归成至智能所有。如有更新，恕不另行通知。请访问[www.gzczzn.com](http://www.gzczzn.com) 官方网站以获取最新的产品信息。

## 警告事项

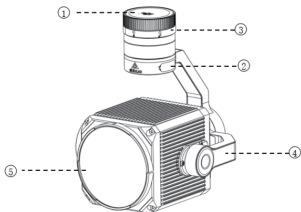
GL60对灯体内部的光路环境要求极为严格，需完全无尘洁净。如遇硬件问题，请返厂维护，请勿擅自拆卸，否则由此造成对光路不良影响的后果自行承担。

## 注意事项

- 1、GL60云台灯的安装方式与大疆其它载荷相同，请确认转接环是否正确安装。
- 2、GL60在无人机起飞前工作，功率会限制在50%以下；起飞后，功率可达100%。

### 三、GL60介绍

成至GL60无人机云台探照灯仅重495克，额定功率高达65W，由多达5片透镜组成的光学成像结构，发射出仅12度角的锐利光柱，有效照射距离可达200米，亮度均匀，颜色一致性高，为无人机夜间作业提供前所未有的空中照射效果，通过 DJI SKYPORT V2.0接口，可直接挂载在大疆经纬 M210 V2、M300 RTK 等系列无人机上使用。连接DJI Pilot APP即可控制开关、切换常亮及爆闪等模式，且能自动跟随云台相机的转动。GL60无风扇的机身实现全密封设计，具备优异的防水防尘性能，能在恶劣气候条件下可靠工作，是DJI M300 RTK行业无人机的最佳搭档。



- |          |                       |         |
|----------|-----------------------|---------|
| 1.防尘盖    | 2.DJI SKYPORT V2.0转接环 | 3.内存卡插槽 |
| 4.三轴增稳云台 | 5.出光口                 |         |

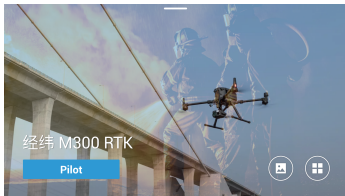


## 技术参数

型号	GL60		
电气接口	DJI SKYPORT V2.0		
尺寸	L132*W110*H137mm		
重量	495g		
总功率	65W		
LED功率	60W		
FOV	12°		
探照距离	150m	100m	50m
探照面积	780m²	347m²	87m²
中心光照度	6Lux	18Lux	52Lux
云台可控转动范围	俯仰	-110°~+30°	
	水平	±200°	
云台结构设计范围	俯仰	-115°~+40°	
	水平	全向360°	
	横滚	-90°~60°	
工作温度	-20℃~+50℃		

## 四、云台灯软件使用教程

- 1、点击DJI Pilot进入主界面。



- 2、进入到主界面，左下角显示出Gimbal SearchLight 60字样，说明GL60定焦云台灯负载识别成功，可进行下一步操作，点击手动飞行。



3、进入主界面后点击多云台联动按钮，选择云台 I 和云台 II，实现云台同步。



4、点击菜单栏，点击第三方负载选项，进入GL60操作界面。



5、点击显示实时数据按钮，在主界面左上角会弹出状态显示框，可观察GL60实时温度及功率等参数状态。



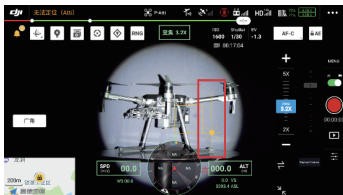
6、点击开关按钮，实现灯的亮灭状态控制；点击闪烁按钮，可开启灯爆闪模式；滑动亮度进度条选项，可以对云台灯进行亮度调节。



7、使用H20和GL60时，可通过俯仰微调按钮、航向微调按钮及水平微调按钮，对画面中的光斑位置进行微调，使光斑保持在画面中央。单次微调后需点击保存微调按钮。每次最大微调 $\pm 5^\circ$ ，点击保存微调后，可继续微调 $\pm 5^\circ$ 。



8、对目标进行观测时，如遇相机曝光过曝情况，可滑动画面上的光圈按钮进行调节。



---

## 五、固件升级

了解GL60云台灯固件更新情况或下载最新版本固件，请关注成至智能官网：  
[www.gzczzn.com](http://www.gzczzn.com)。

如遇到无人机固件更新导致云台灯无法正常工作情况，请及时联系当地代理商或厂家。

如您对说明书有任何疑问或者建议  
请通过以下电子邮箱联系我们：  
[service@gzczzn.com](mailto:service@gzczzn.com)

Printed in China

# Contents

I . Gimbal Light Series Introduction	11
II .Disclaimers And Warnings	11
III . The Introduction Of GL60	12
IV . The Gimbal Light Software Tutorial	15
V .The Firmware Update	19

---

## I . Gimbal Light Series Introduction

This series of products can be used for UAV, film and television shooting, night patrol search light, Power line inspection, emergency lighting, etc.

Through the DJI SKYPORT V2.0 interface, this product can be directly mounted on DJI M300 RTK/M210 V2 for use.

## II . Disclaimer And Warning

Thank you for purchasing our intelligent products. The content mentioned in this article is related to your safety and legal rights and responsibilities. Before using this product, please read this article carefully to ensure that the product has been set up correctly. Ignoring the instructions and warnings in this article may cause harm to you and those around you, and may damage this product or other nearby item. The right to interpret this document and all related documents shall remain with us. If there are any updates, forgive us for not notifying you specifically.

Please visit [www.gzczzn.com](http://www.gzczzn.com) for the latest product information.

## Cautions

GL60 is a precision optical equipment, the body needs a high seal for dust and water proof. If there is any problem with the hardware, please send it back to the manufacturer and contact after-sales service. You must not disassemble and repair by yourself, otherwise you will lose the warranty and maintenance qualification.

### NOTE

1. The installation method of GL60 is the same as that of DJI the PTZ camera. Please confirm whether the installation is correct before taking off.
2. When GL60 works before the UAV takes off, its power will be limited below 50%; After take-off, the power can reach 100%.

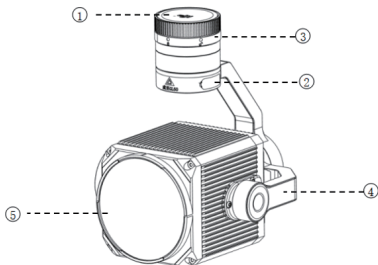


---

### III. The Introduction Of GL60

GL60 only weighs 495 grams and has a rated power of up to 65W. Through an optical imaging structure composed of five lenses, it emits a sharp light column with only 12 degrees of Angle, with an effective irradiation distance of up to 200 meters. Its brightness uniformity and color uniformity are extremely high, providing unprecedented aerial lighting for unmanned aerial vehicles operating at night. Through the DJI SKYPORT V2.0 interface, this product can be directly mounted on DJI M300 RTK, M210 V2 for use.

Connect DJI Pilot APP to control switch, switch regular light and flash mode, and automatically follow the rotation of the PTZ camera. The GL60 UAV Gimbal Lights is the best night partner for DJI M300 RTK drone. It has a fan – free fuselage to achieve a fully sealed design, providing excellent waterproof and dustproof performance, can work reliably in harsh weather conditions. It has an advanced automatic temperature control system.



1. Dust Cover

2. The DJI SKYPORT V2.0 Interface

3. Memory Card Slot

4. UAV 3-axis Gimbal

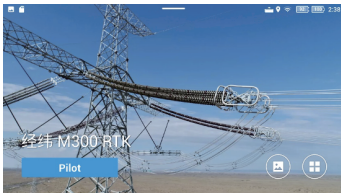
5. The Light Export

## Description Of Parameters

Model	GL60		
Electrical interface	DJI SKYPORT V2.0		
Size/mm	L132*W110*H137		
Weight/g	495		
The total power/w	65		
The LED power/w	60		
FOV/°	12		
Effective distance/m	150	100	50
Effective area/m2	780	347	87
Central illumination/Lux	6	18	52
Controllable Angle	Pitch Angle	-110°~+30°	
	Horizontal Angle	±200°	
Structural design scope	Pitch Angle	-115°~+40°	
	Pitch Angle	Omnidirectional (360°)	
	Roll	-90°C~60°C	
Working temperature	-20°C~+50°C		

## IV. The Gimbal Light Software Tutorial

1. Click DJI Pilot to enter the main interface.



2. Enter the main interface and the word Gimbal SearchLight 60 is displayed in the lower left corner, indicating that the LOAD identification of GL60 is successful. You can proceed to the next step and click manual flight.



3. Enter the main interface and then click the Multi-Gimbal Connection button, and then select the Gimbal I and Gimbal II , achieve the result of two Gimbals synchronization.



4. Click the menu bar and click the third-party load option to enter the GL60 operation interface.



5. Click the button to display real-time data, and a status display box will pop up in the upper left corner of the main interface to observe real-time temperature, power and other parameter states of GL60.



6. Click the switch button to control the on-off state of the light; Click the Twinkle button to turn on the flash mode. Slide the Brightness bar option to adjust the brightness of the GL60.



7. When H20 and GL60 are used simultaneously, the Pitch adjustment button and Roll adjustment button and Yaw adjustment button can be used to keep the spot in the center of the screen. Click the save fine adjustment button after a single fine adjustment. Each time the maximum fine adjustment range is  $\pm 5^\circ$ . You need to save the adjustment and then make another fine adjustment of  $\pm 5^\circ$



8. When observing the target, if the camera is overexposed, it can be adjusted by the aperture button on the sliding screen.



---

## V .The Firmware Update

For firmware update of GL60 UAV Gimbal Light or download the latest version please pay attention to <http://en.gzczzn.com>.

If the Light cannot work properly due to the firmware update of UAV please contact the local agent or manufacturer in time.

If you have any questions or suggestions on the manual, please contact us through the following email: : [service@gzczzn.com](mailto:service@gzczzn.com)

Printed in China